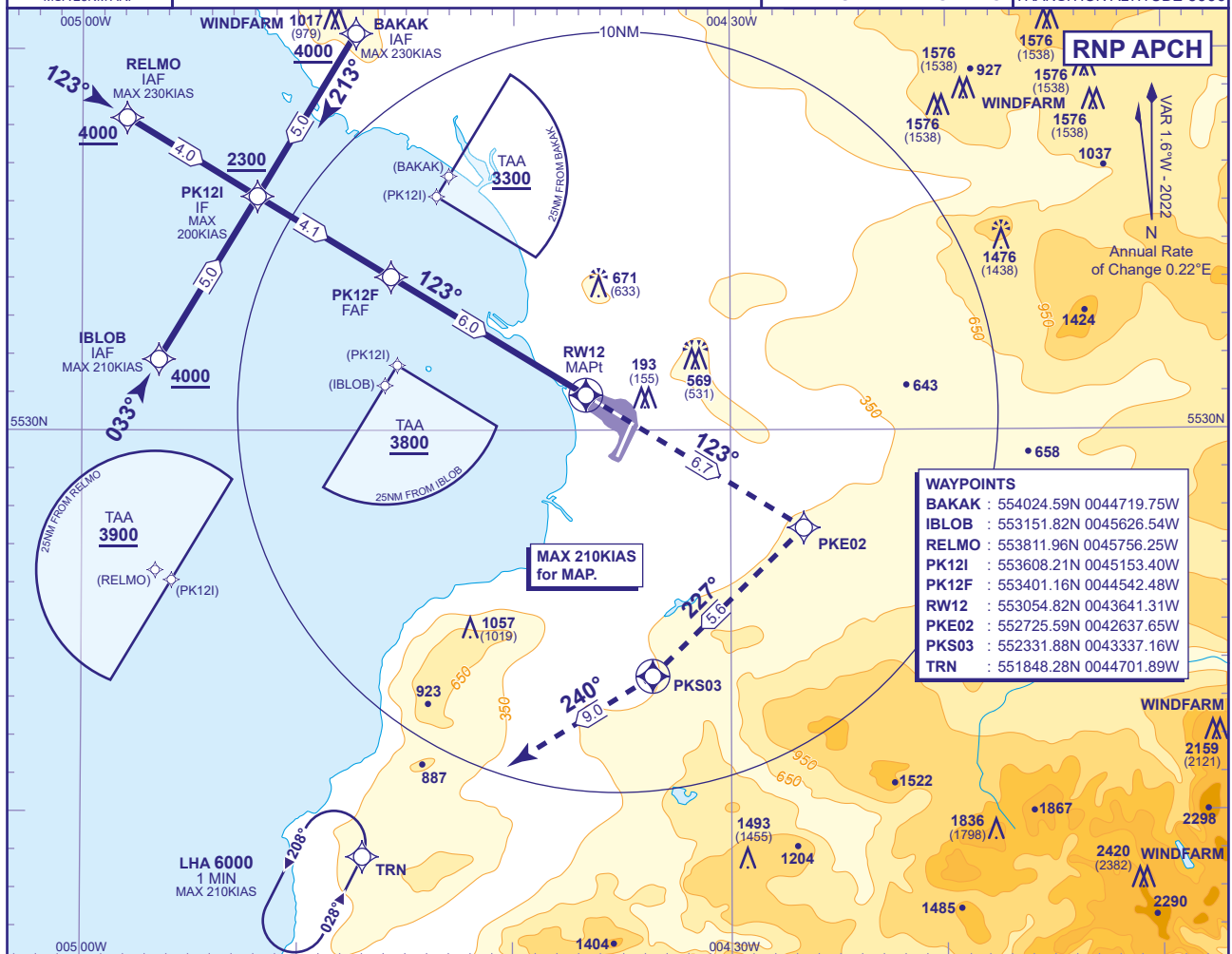


INSTRUMENT APPROACH CHART - ICAO

PRESTWICK

RNP
RWY 12
(ACFT CAT A,B,C,D)

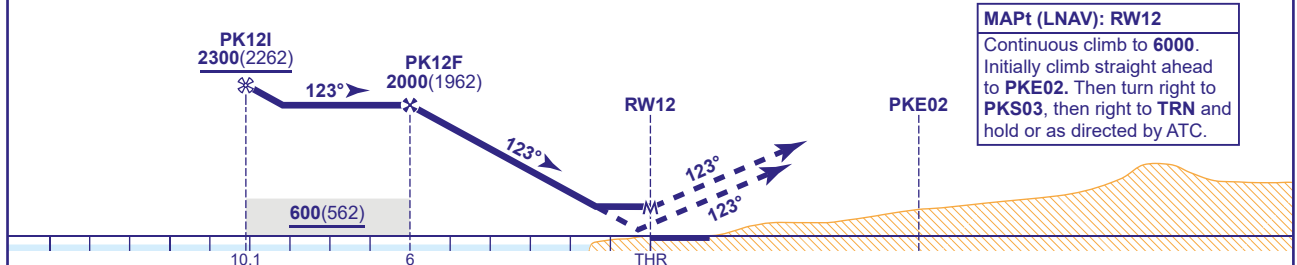
APP	129.450	PRESTWICK APPROACH	AD ELEVATION	65
TWR	118.150, 127.155	PRESTWICK TOWER	THR ELEVATION	38
RAD	129.450, 124.630	PRESTWICK RADAR	OBSTACLE ELEVATION	2420 AMSL (2382) (ABOVE THR)
ATIS	121.130	PRESTWICK INFORMATION	BEARINGS ARE MAGNETIC	

MIN TEMP -15°C
TRANSITION ALTITUDE 6000

RECOMMENDED PROFILE VNAV Vertical Path Angle 3.0°(LNAV 5.24%), 320FT/NM

NM to RW12	5	4	3	2	1
ALT(HGT)	1680(1642)	1360(1322)	1050(1012)	730(692)	410(372)

TCH 53

**MAPt (LNAV): RW12**
Continuous climb to 6000.
Initially climb straight ahead to PKE02. Then turn right to PKS03, then right to TRN and hold or as directed by ATC.

Aircraft Category		A	B	C	D	Rate of descent	G/S KT	160	140	120	100	80
OCA (OCH)	LNAV/VNAV	340(302)	350(312)	370(332)	400(362)		FT/MIN	850	740	640	530	420
	LNAV	420(382)	420(382)	420(382)	420(382)							
VM(C)OCA (OCH AAL)	Total Area	750(685)	870(805)	1070(1005)	1070(1005)							
	SW of RWY 12/30	680(615)	810(745)	910(845)	1070(1005)							

NOTE Portions of this procedure lie outside controlled airspace.

CHANGE (8/25): TRN VOR RECALIBRATED.